



SOTECIN
FACTORY

Pitch Presentation

Partner Name
Contact



This project has received funding from the European Union's Horizon Europe research and innovation programme under the Grant Agreement 101058385. Views and opinions expressed are however those of the authors only and do not necessarily reflect those of the European Union or Health and Digital Executive Agency (HaDEA). Neither the European Union nor the granting authority can be held responsible for them.

We are on a mission
for a more sustainable
and resilient industry



WHAT IS SOTECIN FACTORY?

Horizon Europe project **SoTecIn Factory – Social and Technological Innovation Factory for Low-Carbon and Circular Industrial Value Chains** is a collaborative environment aimed at connecting industry with society in a community of mission-oriented social innovators, to support social entrepreneurs in their drive to increase the circularity of industrial product value chains, and to promote a culture of social innovation in European manufacturing businesses.



SOTECIN FACTORY CONSORTIUM

sotecinfactory.eu/meet-the-team/



Impact Hubs:

Amsterdam

Bucharest

Budapest

Munich

Istanbul

Lisbon

Milan

WHAT WE DO?

SoTecln Factory focuses on **improving the circularity of 4 out of 7 key product value chains**, as defined by the **EU Circular Economy Action Plan**.



Packaging



Plastics



Textiles



Food, Water & Nutrients

Targeted Regions:

Centre-North

(Germany, Denmark, Austria, Sweden, Finland)

Targeted Regions:

North-West

(Netherlands, Northern France, Belgium, Luxembourg, Ireland)

Centre-South

(Italy, Slovenia, Croatia, Malta)

Targeted Regions:

South-West (Portugal, Spain, Southern France)

South-East (Hungary, Greece, Bulgaria, Cyprus, Serbia, Ukraine)

North-East (Romania, Slovakia, Poland, Estonia, Lithuania, Latvia)

East (Turkey, Armenia, Georgia)

WHY WE DO IT?



Circular Value Chains

- eliminate waste & pollution
- keep the products & materials in continuous use
- regenerate natural systems



Resilient Industry

as the capacity to persist, adapt,
or transform
in the face of change

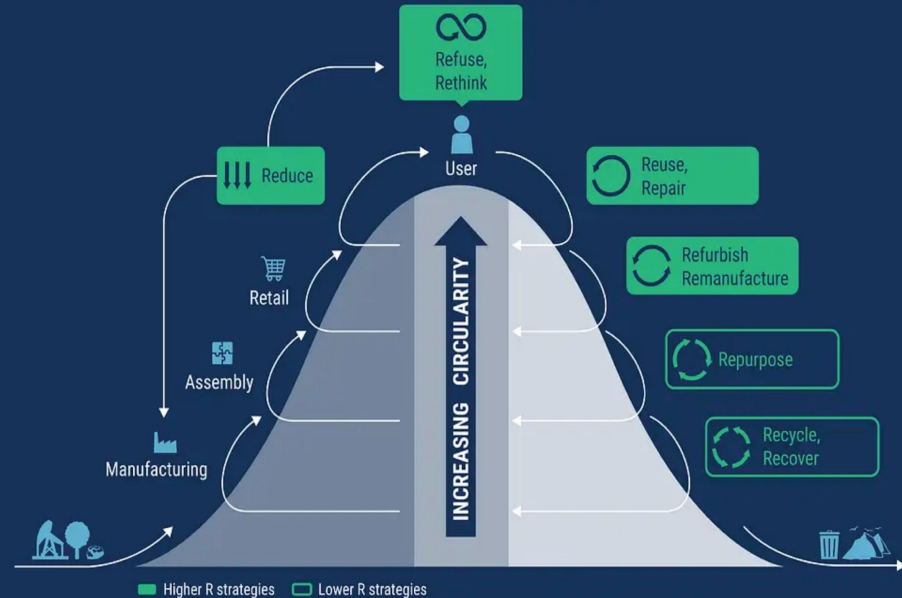


Systemic Change

a lasting structural change in a
system addressing a root cause
rather than a symptom of a
problem
via cross-collaboration of
different actors

HIGHER R STRATEGIES – THE PATH TO CIRCULARITY

Solutions that address the higher R circular strategies, ie. Refuse, Rethink, Reduce, Reuse, Repair, Refurbish and Remanufacture, as they more effectively retain and prolong the economic and material value of product and require fewer resources during production compared to Lower value R strategies: Recycle and Recover and Repurpose.



HOW WE DO IT – KEY CONCEPTS

Mission-based approach

To capture general circular industry challenges in the domain of selected value chains in a bottom-up manner

**7 Regional
Communities
selecting Missions**

**7 Mission Councils
preventing the
Missions drift**

7 value chain-based Missions

Open Innovation

Collaboration of industry actors (public & private) & social innovators

Challenge Owners

**23 Mission-based
Challenges**

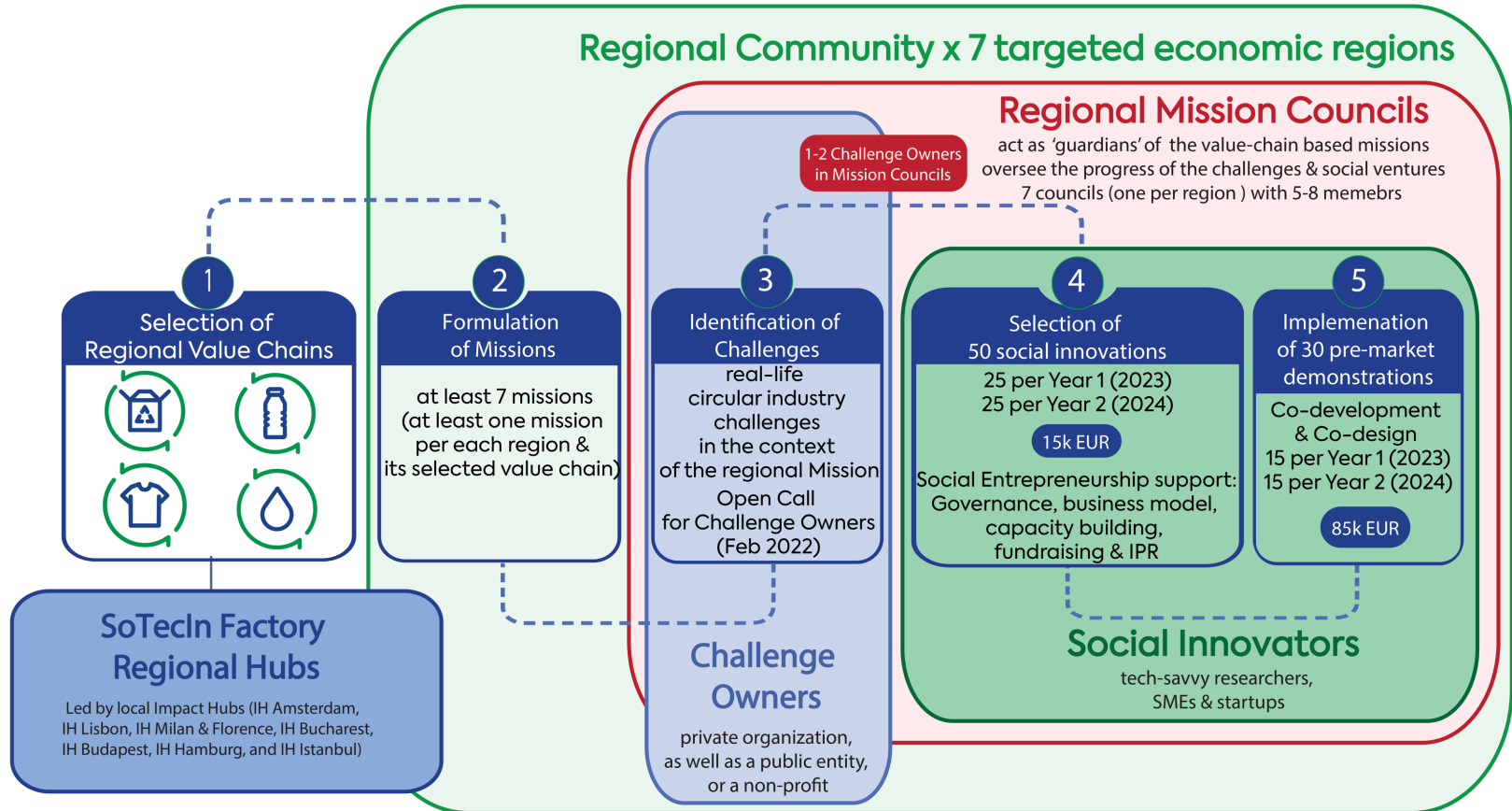
Social Innovation

Civil society actors delivering circular solutions through systemically stewarded social ventures via 2 Open Calls

Social Innovators

**Tech-driven solutions for
Mission-based
Challenges**

HOW WE DO IT – SOTECIN FACTORY ROADMAP



INNOVATIVE MINDS: SOTECIN FACTORY COMMUNITY



Ready to drive change in value chains and make a positive impact with like-minded professionals?

Join our collaborative community of industry experts and support social innovation for a more sustainable future!



Find us on LinkedIn!

[Innovative Minds: SoTecIn Factory Community](#)



SOTECIN
FACTORY

OPEN CALL 2 FOR SOCIAL INNOVATORS



This project has received funding from the European Union's Horizon Europe research and innovation programme under the Grant Agreement 101058385. Views and opinions expressed are however those of the authors only and do not necessarily reflect those of the European Union or Health and Digital Executive Agency (HaDEA). Neither the European Union nor the granting authority can be held responsible for them.

PROGRAMME II IN NUTSHELL



EU-funded project SoTecIn Factory launched the Open Call for Social Innovators for its 3.3M EUR programme supporting mission-driven social innovation ventures in delivering circular solutions through funding, capacity-building & business support.

KEY NUMBERS

- 3 key industry value chains
- 25 tech-savvy innovators funded & supported
- up to 100K per each entity
- 2 phase - programme

OUR MISSION

- systemic industry change through social ventures
- low-carbon & circular economy transition
- pre-market technological demonstration of solutions based on higher "R" circular strategies

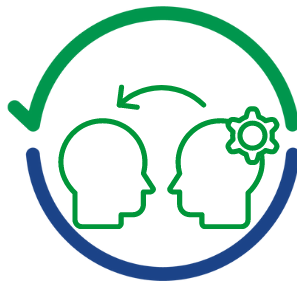


Funded by the
European Union

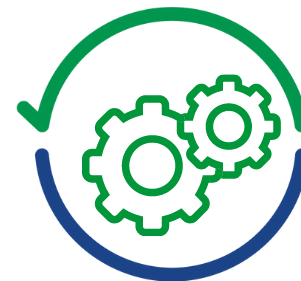
BENEFITS



up to 100K EUR
equity-free funding



Pre-market
technological
demonstration
through expert
guidance



Capacity building
for social entrepreneurship
& circular business support
(workshops & individual
mentoring)



Funded by the
European Union

PROGRAMME II TIMELINE



01 Dec 2023 - 06 Feb 2024

Feb - April 2024

April - Oct 2024

Nov - Dec 2024

Jan - May 2025

Phase 1
Application Period

Phase 1
Evaluation & Selection

Phase 1
Programme

Phase 2
Selection

Phase 2
Programme

25 tech-savvy innovators
up to €15K (equity-free)

Phase 1 capacity-building
& circular business support
(workshops & one-one sessions)

15 tech-savvy innovators
up to €85K (equity-free)

Phase 2 capacity-building
& circular business support
pre-market technological
demonstration



Funded by the
European Union

WHO CAN APPLY

SoTecIn Factory will fund social innovators complying with ALL the following conditions:

Members of the civil society (individuals as organisation representatives or legal entities & organisations itself)

Entities legally established/resident in the EU or Horizon Europe Associated Countries that are eligible for EC funding under the rules of Horizon Europe.

Target Value Chains:



Plastics & Packaging



Food, Water
& Nutrients



Textiles



Funded by the
European Union

HOW TO APPLY FOR OPEN CALL (PHASE 1)



Present us your Challenge

Demonstrate your solution as an answer to:

- a) a challenge based on [a project Mission](#).
- b) one of the [real-life circular industry challenges previously selected by the project](#).
- c) a Mission-based challenge from the organisation brought by the social innovator



Submit the proposal at F6S platform

By filling out the corresponding application form.

Deadline: 06 Feb 2024, 18h CET

NOTE: Use [SoTecln Factory Proposal Template](#)

FOR MORE INFORMATION

- You can find all Open Call Terms and Conditions on the project website:
<https://sotecinfactory.eu/open-calls/open-call-2-for-social-innovators/>
- For further questions and queries, please write to us at:
sotecinfactory@f6s.com
- Ask questions directly in the F6S Discussion Panel:
<https://www.f6s.com/sotecinfactory-oc2-socialinnovators/discuss>



Join SoTecIn Factory Info Webinars to prepare the best Phase 1 proposal:

11 Jan 2024, 12pm CET ([register](#))

23 Jan 2024, 12pm CET ([register](#))



[SoTecIn Factory Events website page:](#)
- get your registration links for all events!



SOTECIN
FACTORY

LET'S CONNECT!



[SoTecIn Factory](#)



[Innovative Minds: SoTecIn Factory Community](#)



[@sotecinfactory](#)

www.sotecinfactory.eu



[@sotecinfactory](#)



[@sotecinfactory5162](#)

 SUBSCRIBE

[SoTecIn Factory Newsletter](#)



hello@sotecinfactory.eu



Funded by the
European Union



INESCTEC

bwcon





SOTECIN
FACTORY

THANK YOU!

Partner Name
Contact



Funded by the
European Union



INESCTEC

bwcon

